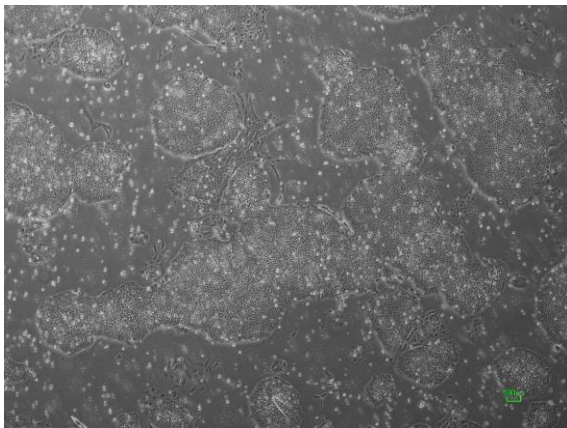
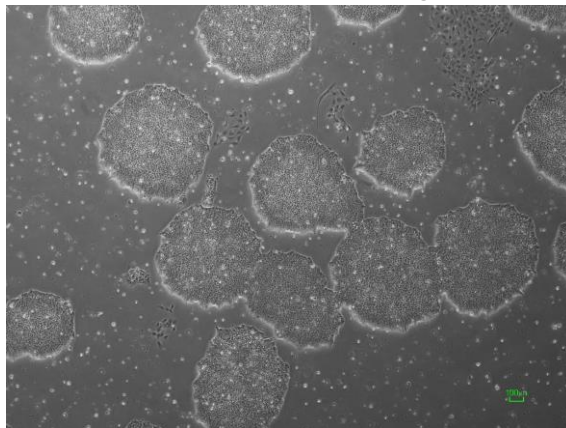


## 【 CiRA-jk-0036 】 Morphology of iPSC colonies

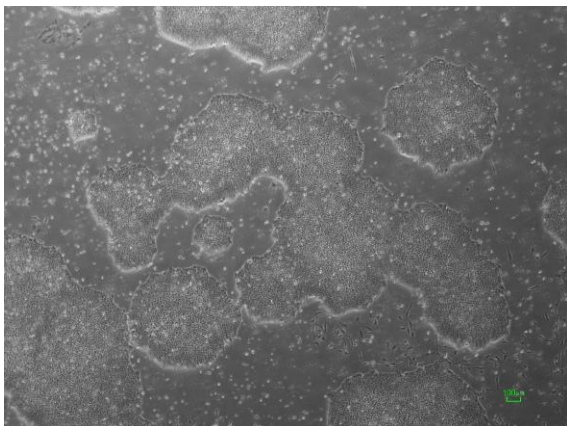
CiRA -jk-0036-A: passage-2



CiRA -jk-0036-B: passage-2



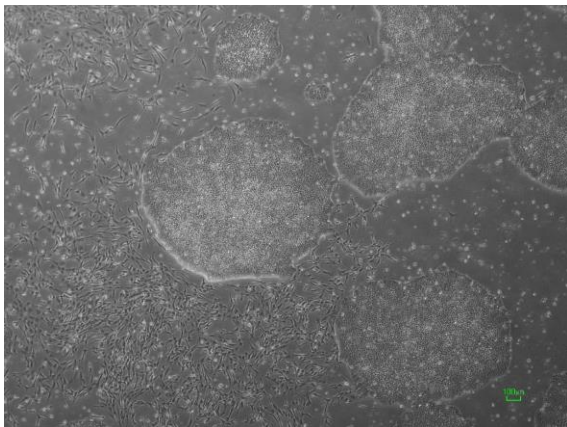
CiRA -jk-0036-C: passage-2



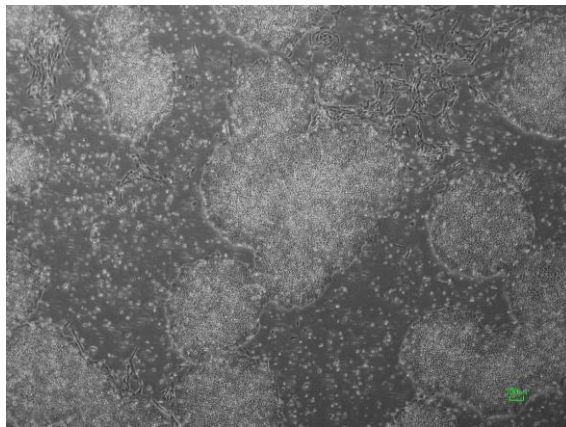
CiRA -jk-0036-D: passage-2



CiRA -jk-0036-E: passage-2



CiRA -jk-0036-F: passage-2



( All images were captured at 4x magnification )